



India Meteorological Department

(Ministry of Earth Sciences)

NATIONAL BULLETIN NO.: 06 (BOB/03/2023)

TIME OF ISSUE: 0830 HOURS IST

DATED: 02.08.2023

FROM: INDIA METEOROLOGICAL DEPARTMENT (FAX NO. 24643965/24699216/24623220)

TO: CONTROL ROOM, NDM, MINISTRY OF HOME AFFAIRS (FAX.NO. 23093750)

CONTROL ROOM NDMA (FAX.NO. 26701729)

CABINET SECRETARIAT (FAX.NO.23012284, 23018638)

PS TO HON'BLE MINISTER FOR S & T AND EARTH SCIENCES (FAX NO.23316745)

SECRETARY, MOES (FAX NO. 24629777)

H.Q. (INTEGRATED DEFENCE STAFF AND CDS) (FAX NO. 23005137/23005147)

DIRECTOR GENERAL, DOORDARSHAN (23385843)

DIRECTOR GENERAL, AIR (23421105, 23421219)

PIB MOES (FAX NO. 23389042)

UNI (FAX NO. 23355841)

D.G. NATIONAL DISASTER RESPONSE FORCE (NDRF) (FAX NO. 26105912, 2436 3260)

DIRECTOR, PUNCTUALITY, INDIAN RAILWAYS (FAX NO. 23388503)

CHIEF SECRETARY, WEST BENGAL (FAX NO. 033-22144328)

CHIEF SECRETARY, ODISHA (FAX NO. 0674-2536660)

CHIEF SECRETARY, ANDHRA PRADESH (FAX NO. 0863-2441029, 08645-246600)

ADMINISTRATOR, ANDAMAN & NICOBAR ISLANDS (FAX NO. 03192- 232656)

Sub: Deep Depression over Gangetic West Bengal

The Deep Depression over coastal Bangladesh and neighbourhood moved west-northwestwards with a speed of 31 kmph during past 6 hours and lay centred at 0530 hours IST of 02nd August, 2023 over Gangetic West Bengal near latitude 23.1°N and longitude 87.2°E, close to Bankura (West Bengal), about 130 km west-northwest of Kolkata (West Bengal) and 190 km east-southeast of Ranchi.

It is likely to move west-northwestwards across Jharkhand and weaken gradually into a Depression during next 12 hours and into a Well Marked Low Pressure Area during subsequent 24 hours.

Forecast track and intensity are given in the following table:

Date/Time(IST)	Position (Lat. °N/ long. °E)	Maximum sustained surface wind speed (Kmph)	Category of cyclonic disturbance
02.08.23/0530	23.1/87.2	50-60 gusting to 70	Deep Depression
02.08.23/1130	23.4/85.9	50-60 gusting to 70	Deep Depression
02.08.23/1730	23.6/84.8	45-55 gusting to 65	Depression
02.08.23/2330	23.9/83.7	40-50 gusting to 60	Depression
03.08.23/0530	24.2/82.6	35-45 gusting to 55	Depression

Warnings:

(i) Rainfall warning

Odisha: Light to moderate rainfall at most places with isolated heavy to very heavy rainfall over Odisha on 02nd & 3rd August and isolated extremely heavy rainfall also likely over north Odisha on 2nd August.

Gangetic West Bengal: Light to moderate rainfall at most places with isolated heavy to very heavy rainfall over Gangetic West Bengal on 2nd August.

Spatial rainfall distribution: Isolated: <25%, A few: 26-50%, Many: 51-75%, Most: 76-100%

Rainfall amount (mm): Heavy rain: 64.5 – 115.5, Very heavy rain: 115.6 – 204.4, Extremely heavy rain: 204.5 or more.

Jharkhand: Light to moderate rainfall at most places with isolated heavy to very heavy rainfall on 2nd August.

Chhattisgarh: Light to moderate rainfall at most places with isolated heavy to very heavy rainfall over Chhattisgarh on 2nd & 3rd August and isolated extremely heavy rainfall also likely over north Chhattisgarh on 2nd Aug.

Bihar: Light to moderate rainfall at most places with isolated heavy to very heavy rainfall on 2nd & 3rd August.

East Madhya Pradesh: Light to moderate rainfall at most places with isolated heavy to very heavy rainfall on 2nd & 3rd August and isolated extremely heavy rainfall likely on 3rd August.

West Madhya Pradesh: Light to moderate rainfall at most places with isolated heavy to very heavy rainfall on 2nd & 3rd August.

East Uttar Pradesh: Light to moderate rainfall at most places with isolated heavy to very heavy rainfall on 2nd & 3rd August.

(ii) Wind warning

Squally wind speed reaching 45-55 kmph gusting to 65 kmph very likely to prevail over North Bay of Bengal and adjoining Bangladesh-West Bengal coasts till today afternoon and wind speed 35-45 kmph gusting to 55 likely to prevail from afternoon of 2nd August for subsequent 6 hours and thereafter it will further decrease gradually.

Squally wind speed reaching 40-50 kmph gusting to 60 kmph very likely to prevailing along & off North Odisha coast till today afternoon and wind speed 35-45 kmph gusting to 55 likely to prevail from afternoon of 2nd August for subsequent 6 hours and thereafter it will further decrease gradually.

(iii) Sea Condition: Rough to very rough sea condition very likely to prevail over North Bay of Bengal and adjoining Bangladesh-West Bengal-North Odisha coasts till forenoon of today, the 2nd August and moderate to rough sea conditions likely to prevail thereafter for subsequent 06 hours.

(iv) Fishermen Warning

Fishermen are advised not to venture into North Bay of Bengal and adjoining Bangladesh-West Bengal-North Odisha coasts till afternoon of today, the 2nd August.

(v) Damage Expected over coastal districts of West Bengal

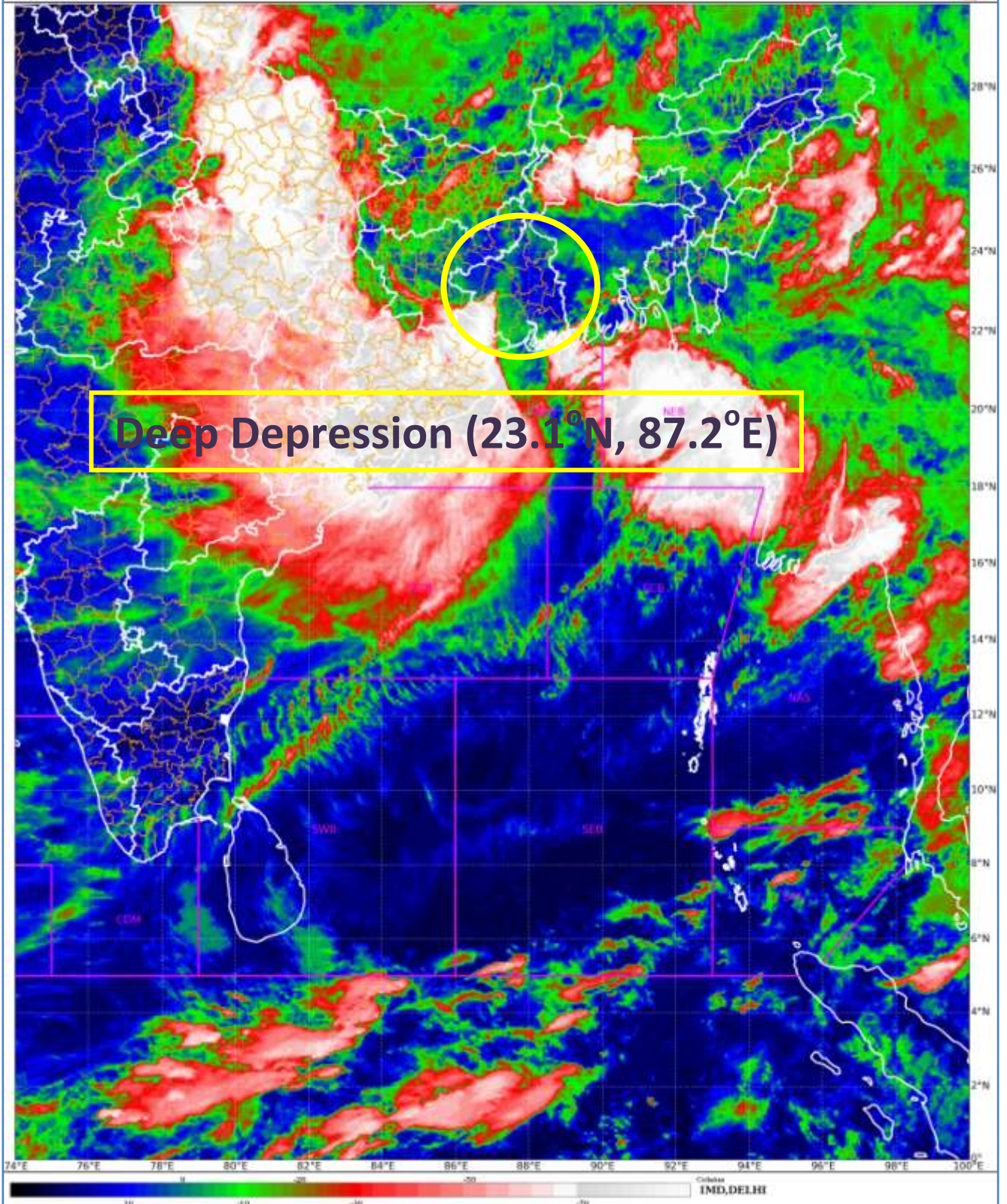
- Minor damage to loose / unsecured structures.
- Some breaches in Kutcha road due to flooding.
- Minor damage to Banana trees and near coastal agriculture.
- Damage to standing agriculture & horticulture crops.
- Minor damage to Kutcha embankments.

The next bulletin will be issued at 1130 hrs IST of 2nd August, 2023.

(Shobhit Katiyar)
Scientist-D, RSMC, New Delhi

Copy to: CRS, Pune/ACWC Kolkata/Chennai/CWC Bhubaneswar/CWC Visakhapatnam/MO Port Blair

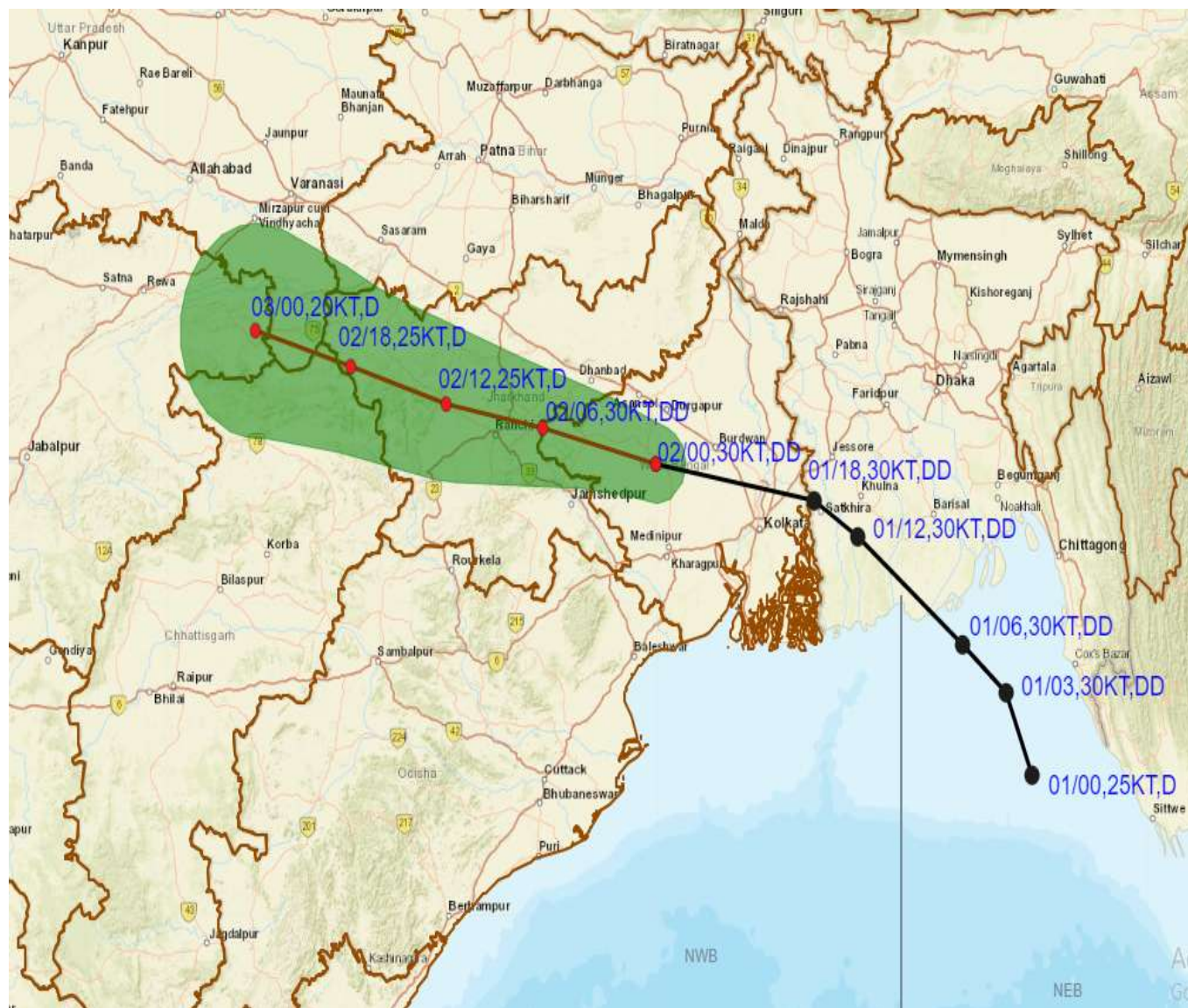
Spatial rainfall distribution: Isolated: <25%, A few: 26-50%, Many: 51-75%, Most: 76-100%
Rainfall amount (mm): Heavy rain: 64.5 – 115.5, Very heavy rain: 115.6 – 204.4, Extremely heavy rain: 204.5 or more.



Spatial rainfall distribution: Isolated: <25%, A few: 26-50%, Many: 51-75%, Most: 76-100%
Rainfall amount (mm): Heavy rain: 64.5 – 115.5, Very heavy rain: 115.6 – 204.4, Extremely heavy rain: 204.5 or more.



OBSERVED AND FORECAST TRACK OF DEEP DEPRESSION OVER GANGETIC WEST BENGAL BASED ON 0000 UTC (0530 IST) OF 02ND AUGUST 2023.



DATE/TIME IN UTC

IST=UTC + 0530

L: LOW PRESSURE AREA

WML: WELL MARKED LOW PRESSURE AREA

D: DEPRESSION (17-27 KT)

DD: DEEP DEPRESSION (28-33 KT)

CS: CYCLONIC STORM (34-47 KT)

SCS: SEVERE CYCLONIC STORM (48-63KT)

VSCS: VERY SEVERE CYCLONIC STORM (64-89 KT)

ESCS: EXTREMELY SEVERE CYCLONIC STORM (90-119 KT)

SuCS: SUPER CYCLONIC STORM (≥ 120 KT)

LESS THAN 34 KT

34-47 KT

≥ 48 KT

OBSERVED TRACK

FORECAST TRACK

CONE OF UNCERTAINTY

Spatial rainfall distribution: Isolated: <25%, A few: 26-50%, Many: 51-75%, Most: 76-100%

Rainfall amount (mm): Heavy rain: 64.5 – 115.5, Very heavy rain: 115.6 – 204.4, Extremely heavy rain: 204.5 or more.



OBSERVED AND FORECAST TRACK ALONGWITH QUADRANT WIND DISTRIBUTION OF DEEP DEPRESSION OVER GANGETIC WEST BENGAL BASED ON 0000 UTC (0530 IST) OF 02ND AUGUST 2023.



DATE/TIME IN UTC
 IST=UTC + 0530
 L: LOW PRESSURE AREA
 WML: WELL MARKED LOW PRESSURE AREA
 D: DEPRESSION (17-27 KT)
 DD: DEEP DEPRESSION (28-33 KT)
 CS: CYCLONIC STORM (34-47 KT)
 SCS: SEVERE CYCLONIC STORM (48-63KT)
 VSCS: VERY SEVERE CYCLONIC STORM (64-89 KT)
 ESCS: EXTREMELY SEVERE CYCLONIC STORM (90-119 KT)
 SuCS: SUPER CYCLONIC STORM (≥ 120 KT)

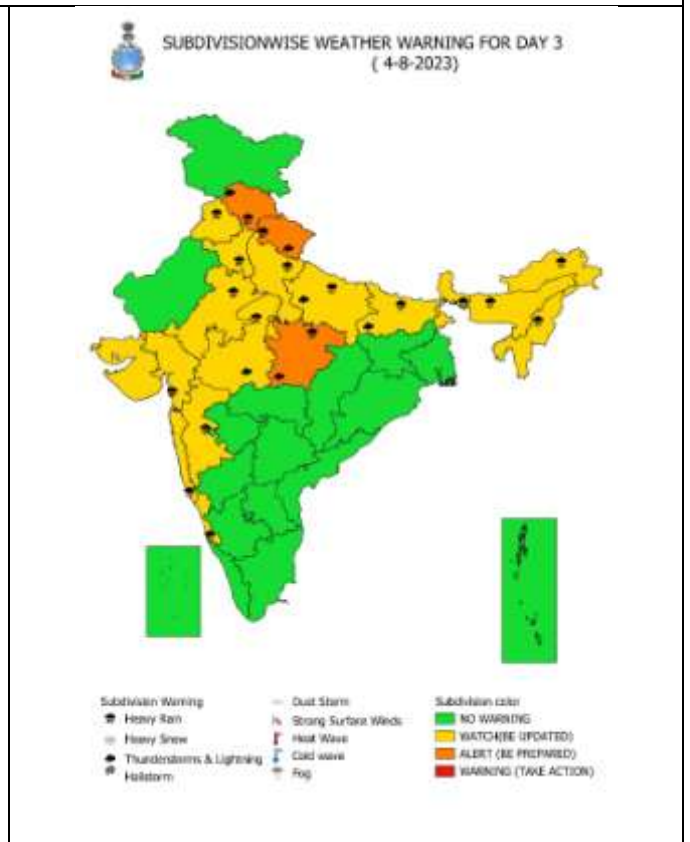
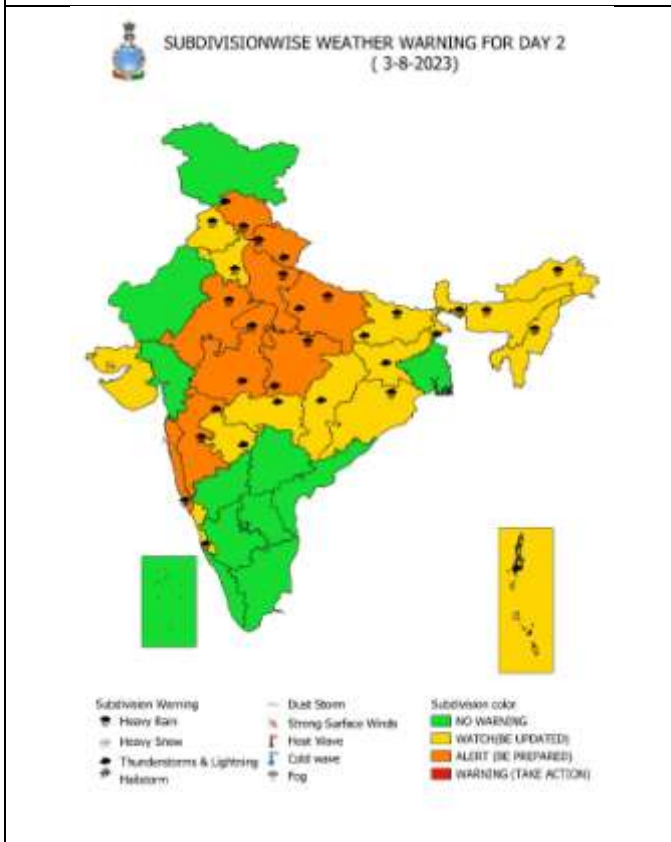
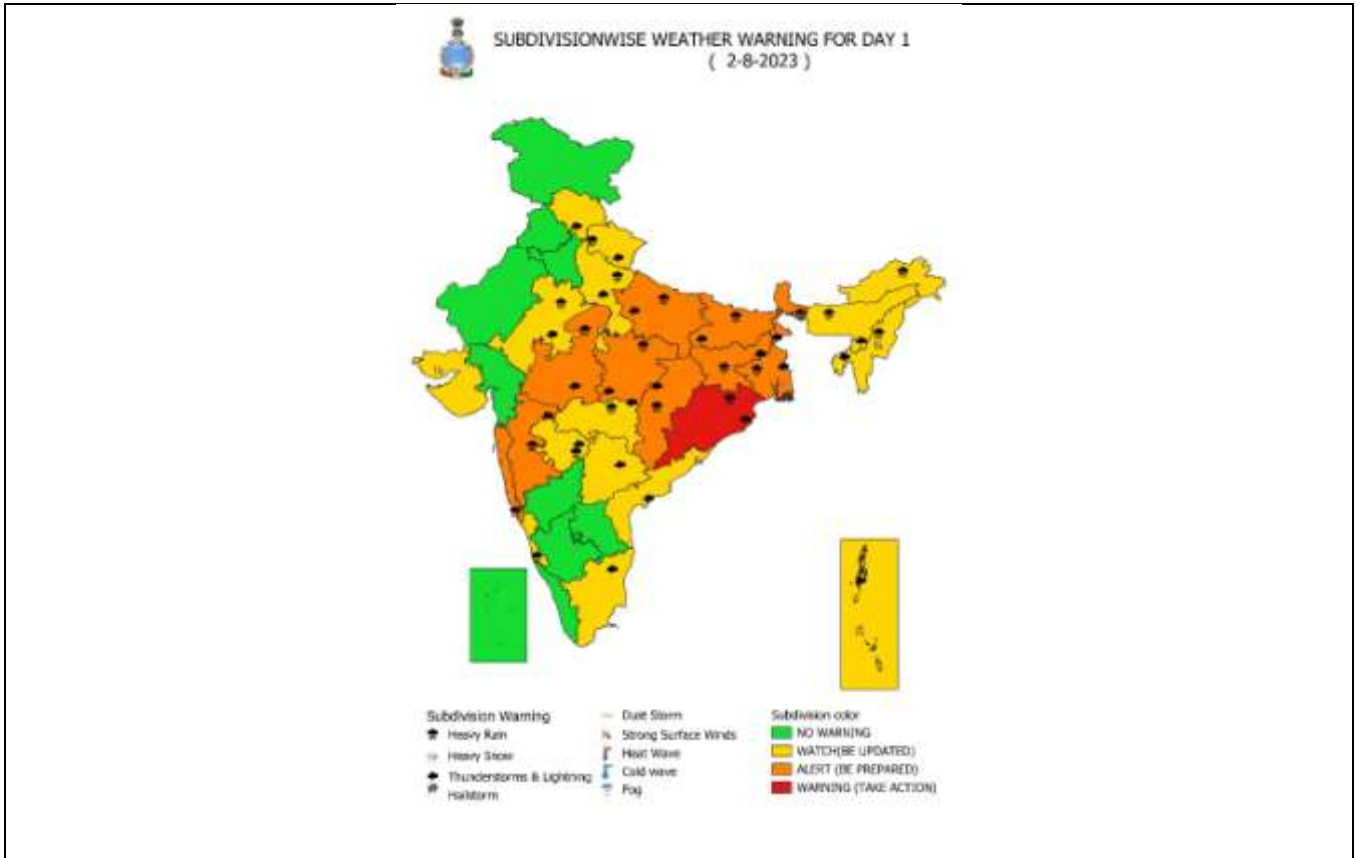
● LESS THAN 34 KT
 ○ 34.47 KT
 ● ≥ 48 KT
 — OBSERVED TRACK
 — FORECAST TRACK
 — CONE OF UNCERTAINTY
 AREA OF MAXIMUM SUSTAINED WIND SPEED:
 ■ 28-33 KT (52-61 KMPH)
 ■ 34-49 KT (62-91 KMPH)
 ■ 50-63 KT (92-117 KMPH)
 ■ ≥ 64 KT (≥118 KMPH)

IMPACT OVER THE SEA

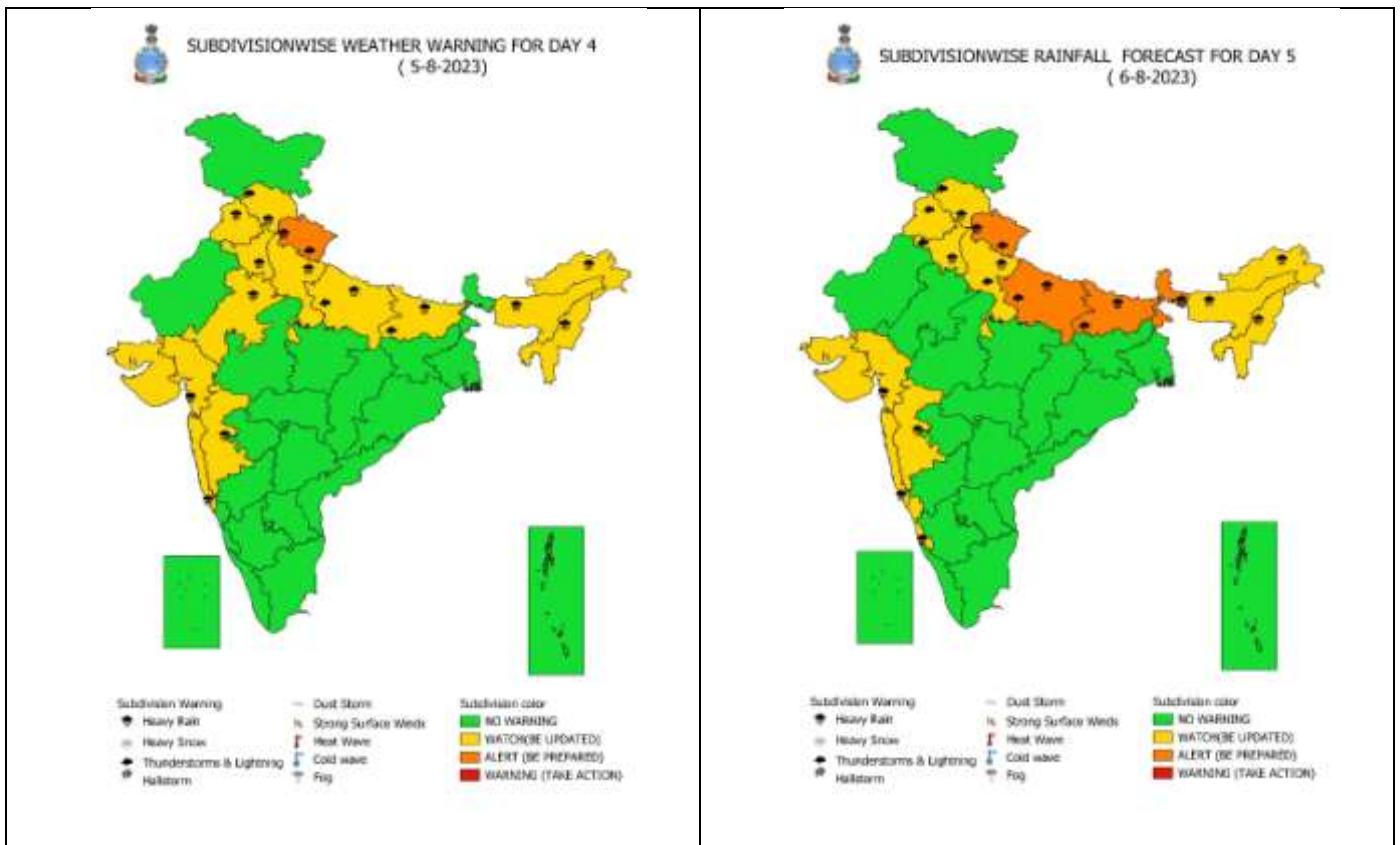
MSW (knot/kmph)	Impact	Action
28-33 (52-61)	Very rough seas	Total suspension of fishing operations
34-49 (62-91)	High to very high seas	Total suspension of fishing operations
50-63 (92-117)	Very high seas	Total suspension of fishing operations
≥ 64 (≥118)	Phenomenal	Total suspension of fishing operations

Spatial rainfall distribution: Isolated: <25%, A few: 26-50%, Many: 51-75%, Most: 76-100%
 Rainfall amount (mm): Heavy rain: 64.5 – 115.5, Very heavy rain: 115.6 – 204.4, Extremely heavy rain: 204.5 or more.

Weather Warning Graphics

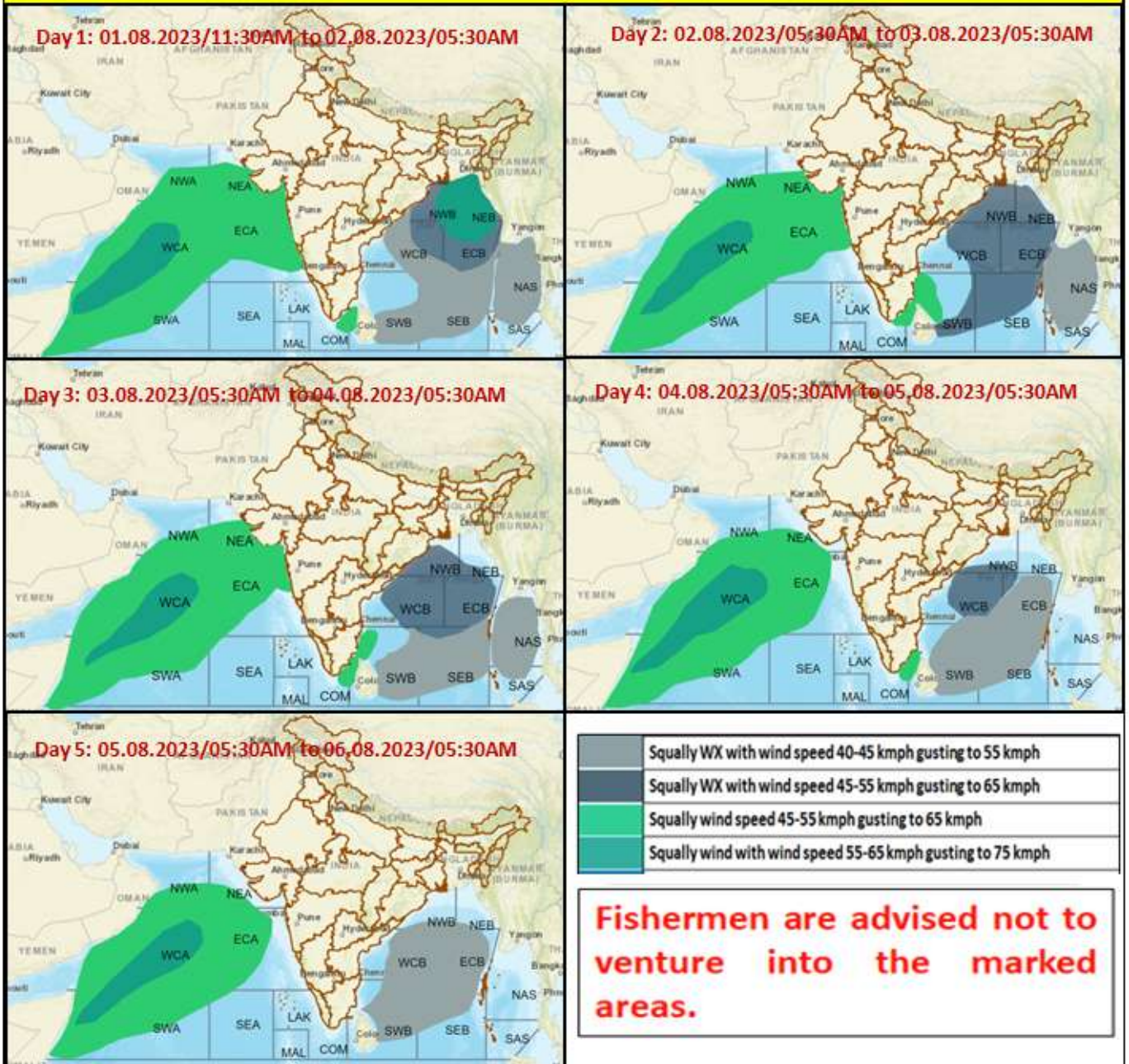


Spatial rainfall distribution: Isolated: <25%, A few: 26-50%, Many: 51-75%, Most: 76-100%
Rainfall amount (mm): Heavy rain: 64.5 – 115.5, Very heavy rain: 115.6 – 204.4, Extremely heavy rain: 204.5 or more.



Spatial rainfall distribution: Isolated: <25%, A few: 26-50%, Many: 51-75%, Most: 76-100%
Rainfall amount (mm): Heavy rain: 64.5 – 115.5, Very heavy rain: 115.6 – 204.4, Extremely heavy rain: 204.5 or more.

Fishermen warning graphics



Spatial rainfall distribution: Isolated: <25%, A few: 26-50%, Many: 51-75%, Most: 76-100%
 Rainfall amount (mm): Heavy rain: 64.5 – 115.5, Very heavy rain: 115.6 – 204.4, Extremely heavy rain: 204.5 or more.

Flash Flood Guidance

Persistent Flash Flood Threat (PFFT) till 1130 IST of 02-08-2023 :

Low to Moderate flash flood threat likely over few watersheds & neighbourhoods of following Met Sub-divisions during next 6 hours.

East Uttar Pradesh - Sonbhadra district.

Chhattisgarh– Korea, Balrampur and Surajpur districts.

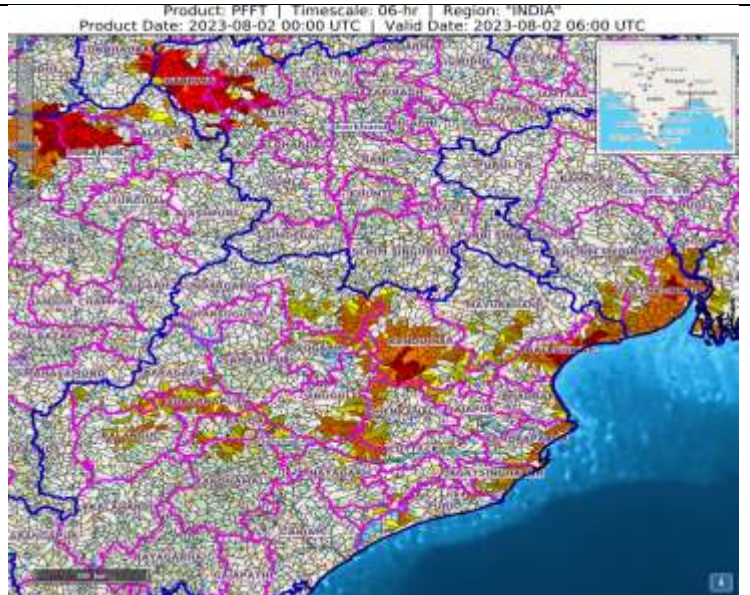
East Madhya Pradesh - Shahdol and Sidhi districts.

Odisha - Anugul, Balangir, Baleshwar, Baragarh, Bauda, Cuttack, Deogarh, Dhenkanal, Jagatsinghapur, Kandhamal, Kendraparha, Kendujhar, Mayurbhanj, Nayagarh, Puri and Sundargarh districts.

Gangetic West Bengal - Eastmednipur, Haora, Pashchim Medinipur and South 24 Parganas districts.

Jharkhand - Garhwa, Latehar and Palamu districts.

Surface runoff/ Inundation may occur at some fully saturated soils & low-lying areas over AoC as shown in map due to expected rainfall occurrence in next 6 hours.

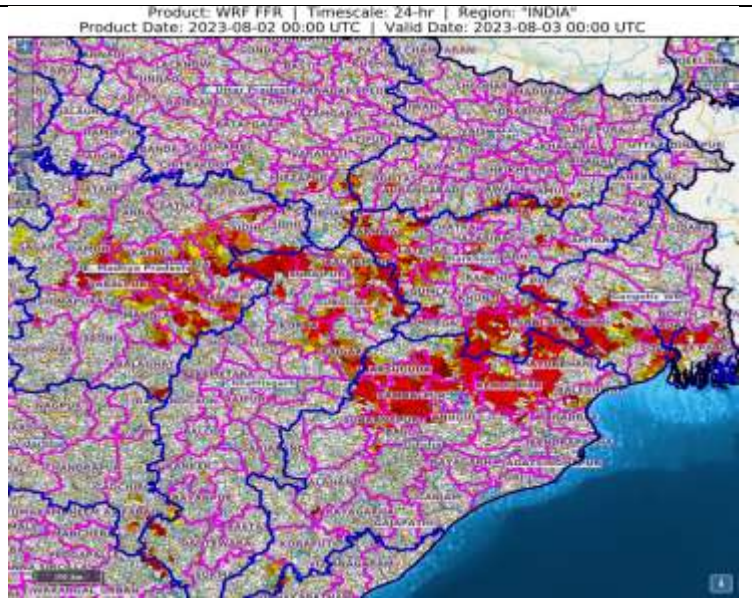


Spatial rainfall distribution: Isolated: <25%, A few: 26-50%, Many: 51-75%, Most: 76-100%
Rainfall amount (mm): Heavy rain: 64.5 – 115.5, Very heavy rain: 115.6 – 204.4, Extremely heavy rain: 204.5 or more.

24 hours Outlook for the Flash Flood Risk (FFR) till 0530 IST of 03-08-2023 :

Low to Moderate flash flood risk likely over few watersheds & neighbourhoods of North Chhattisgarh & adjoining South-East Uttar Pradesh, Jharkhand, East Madhya Pradesh, North Odisha & adjoining Gangetic West Bengal Met Sub-divisions during next 24 hours.

Surface runoff/ Inundation may occur at some fully saturated soils & low-lying areas over AoC as shown in map due to expected rainfall occurrence in next 24 hours.



Spatial rainfall distribution: Isolated: <25%, A few: 26-50%, Many: 51-75%, Most: 76-100%
Rainfall amount (mm): Heavy rain: 64.5 – 115.5, Very heavy rain: 115.6 – 204.4, Extremely heavy rain: 204.5 or more.